



## ONE OF THE MOST INFLUENTIAL BRANDS

Created in 1945, by a woman for women, Hélène Lazareff's desire was to open women's appetite after World War II, and democratize fashion. She changed the face of the press with her unique tone made of

**“Seriousness in frivolity  
& irony in graveness”**

With its pioneering spirit, ELLE has become more than a magazine. It has become one of the most influential brands in the world,  
**since 1945 &... forever**

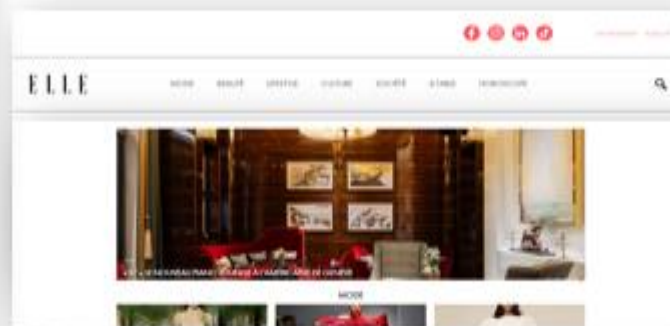
## ELLE NETWORK - UPDATE

## NEW EDITIONS - 2024

- January - ELLE Switzerland | Digital
- ELLE Australia | Print - 2 issues per year
- February - ELLE Lithuania
- April - ELLE Ivory Coast | Print - 3 issues per year + digital
- May - ELLE Luxembourg
- May - ELLE Uzbekistan
- May - ELLE Egypt | Digital
- September - ELLE Malaysia

**BIG MILESTONE**

**50 editions of ELLE in the world in 2024**





# ELLE IN THE AMERICAS

Total Followers  
+28M

# ELLE

## USA



**12.7M**

Total audience

**39.7M**

Total brand impressions

**5.2M**

Print readers

**23.6M**

Social media followers

**1M**

Copies

**44**

Median age

## CANADA



**1.2M**

Print readers

**306.6K**

Social media followers

**76.4K**

Copies

**39**

Median age

## QUEBEC



**432K**

Print readers

**182K**

Social media followers

**39**

Median age

## MEXICO



**234K**

Print readers

**1.9M**

Social media followers

**65K**

Copies

## ARGENTINA



**16K**

Print readers

**135K**

Social media followers

**6K**

Copies

## BRAZIL



**15K**

Print readers

**2M**

Social media followers

**7K**

Copies

# ELLE

## READER & CONSUMER PROFILE



### RACES

Race	Percentage
WHITE	39.4%
DIVERSE	60.6%

VIVITAR

# LADIES GROOMING





**Item : EL027-WHT**

### FEATURES:

- Painless hair removal
- Built-in light for complete control
- Portable and compact for easy storage and use on-the-go
- Operates on 1 AA battery (not included)



**Item : EL027-BLK**

### FEATURES:

- Painless hair removal
- Built-in light for complete control
- Portable and compact for easy storage and use on-the-go
- Operates on 1 AA battery (not included)



**Item : EL027-RG**

### FEATURES:

- Painless hair removal
- Built-in light for complete control
- Portable and compact for easy storage and use on-the-go
- Operates on 1 AA battery (not included)





**Item : EL037-RG**

### FEATURES:

- Precise eyebrow shaping and safely removes hair
- Portable and compact for easy storage and travel friendly
- Built-in light for complete control
- Operates on 1 AAA battery (not included)



**Item : EL037-BLK**

### FEATURES:

- Precise eyebrow shaping and safely removes hair
- Portable and compact for easy storage and travel friendly
- Built-in light for complete control
- Operates on 1 AAA battery (not included)



**Item : EL016**

### FEATURES:

- Ideal for removing unwanted hair & peach fuzz from upper lip, chin, cheeks & neck
- Achieve precise eyebrow shaping & gentle bikini trimming
- Rinseable stainless steel blades for easy cleaning. Cap included
- Portable & sleek design
- Operates of 1 AAA battery (not included)



**Item : EL046-RG**

### **FEATURES:**

- Dermaplaning facial exfoliation & hair remover tool
- Built-in light for complete control
- Gentle vibration for deep exfoliation
- Achieve radiant skin for smooth makeup application
- Includes standing base, 6 replacement heads & safety cap
- Operates on 1 AA battery(not included)





**Item : EL014**

### FEATURES:

- Precision bikini trimmer
- Angled trimmer and foil heads help avoid irritation
- Guide comb helps to achieve your desired length
- Operates on 1 AA battery (not included)



**Item : EL011**

### FEATURES:

- Achieves softer, more beautiful feet in minutes
- Removes hard, dry skin, & calluses
- 360° rolling buffer
- Safe & easy to use
- Works with 4 AA batteries (not included)



**Item : EL021**

### FEATURES:

- Removes tough calluses, cracked dry skin, and rough areas safely
- 360° rotating roller
- Easy to use
- Dual speed
- 2 heads included: 1 coarse & fine
- Sleek & ergonomically designed handle for extra comfort
- Waterproof for easy cleaning
- Power source: 4 AAA batteries (not included) or USB cable (included)



**Item : EL024**

### FEATURES:

- Includes all essentials for a perfect gel manicure
- Portable size to carry for a touch-up on-the-go
- Electric nail shaper: powerful motor shapes nails to perfection with 5 attachment heads. Operates on 2 AA batteries(not included)
- 2 pouches : for easy traveling
- LED UV gel curing lamp: Effectively cures your gel nail polish. Operated by USB Cable



**Item : EL003**

### FEATURES:

- Cures all gel nail products
- Ergonomic design for manicure and pedicure use
- Two settings: 45 or 60 seconds
- Lightweight and portable
- Perfect for on-the go
- Cordless and lithium rechargeable



**Item : EL005**

### FEATURES:

- Cures all gel nail products
- Built-in mirror at top is perfect for makeup touchups on the go
- Ergonomic design for manicure and pedicure user
- Two settings : 45 or 60 seconds
- Compact and portable
- Powered by a USB cable, connect to any device



**Item : EL045**

### FEATURES:

- Powerful & efficient LED nail lamp quickly dries & cures all gel polishes
- 4 timing setting :10s, 30s, 60s, & 99s
- Features automatic sensors
- Great for nails & toes
- Delivers salon results & long lasting manicure



**Item : EL1865**

### FEATURES:

- 3 temperature settings for desired heat with indicator light
- Warm all types of waxes; 600ml capacity
- Removable & see-through lid for easy access of wax
- Includes 100g wax bead bag and 20 applicator sticks



**Item : EL1842**

### FEATURES:

- Use at home waxing with professional results. Remove hair on large areas: leg, arm, back, & chest. Works on all hair types
- Easy to fill & refill. Glide on easily for a fast & effectively remove hair with little redness & irritation
- Heats up within 20-30 minutes
- Portable & lightweight design: perfect for on the go



**Item : EL6300**

### FEATURES:

- Massages your skin
- Helps your skincare products penetrate deeper
- Vibration helps exfoliate to remove skin impurities
- 3 modes cleansing, moisturizing and lifting
- Upto 45 minutes run time on a full charge
- Cordless and rechargeable lithium battery





**Item : EL6500**

### FEATURES:

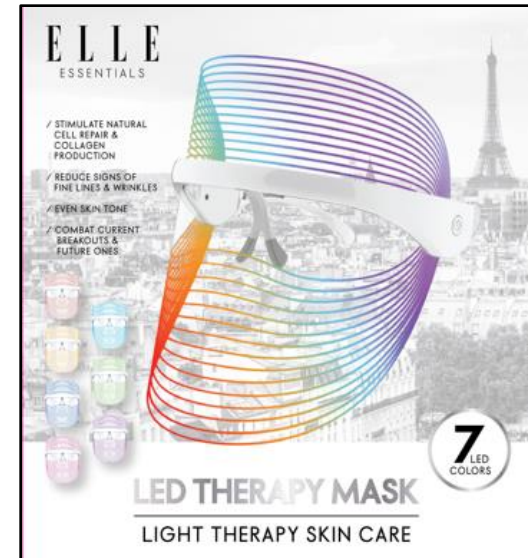
- Rechargeable up to 60 minutes of run time on a full charge
- Small and compact for your travel needs
- 4 facial modes: cleansing peeling mode, phototherapy mode, firm lifting mode, eye care mode
- LCD Screen: Display modes
- LED light therapy: integrates positive ions, micro vibration, red light, blue light



**Item : EL7500**

### FEATURES:

- 7 LED colors: each color targets a specific concern of the skin
- 100%UV free: no harmful UV rays
- Non-invasive: high intensity LED's help the skin achieve a more radiant youthful glow
- Adjustable strap: provides a snug fit while in use comfortable & easy to take off and on
- Works on all skin types, whether oily, dry, or both



**Item : EL7600**

### FEATURES:

- 7 LED colors: each color targets a specific concern of the skin
- 100%UV free: no harmful UV rays
- Easy to use: one key operation; long press to turn on and short press to cycle through the colors
- All skin types: works on all skin types; oily, dry & combination
- On-the-go: lightweight & rechargeable. Crafted from light & thin materials for a comfortable experience



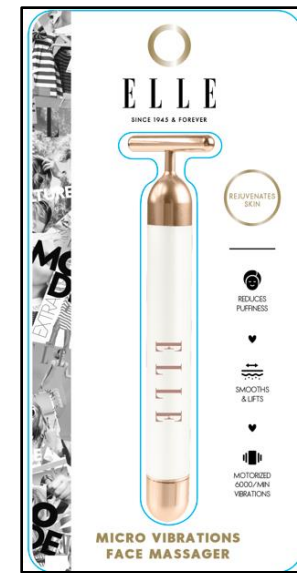
**Item : EL241**

### FEATURES:

- Keeps your skin looking young by improving blood circulation and skin tone
- Gently roll the cool stone over your face to increase skin elasticity and firmness
- Use with small amount of face cream and moisturizer for best results
- Helps reduce dark circles and puffy eyes
- Portable and lightweight design allows easy transport
- Slim handle delivers a comfortable grip
- Easy on/off twist feature
- Operates 1 AA battery (not included)



**Item : EL7001-RG**



**Item : EL7001-WHT**

### FEATURES:

- Helps to stimulate blood flow
- Reduces the appearance of undereye bags
- Gentle vibrations instantly relaxing facial muscles to release tension
- Helps the skin look lifted and toned with each vibration
- Refreshed and rejuvenates skin
- Operates on 1 AA battery (not included)

ELLE  
PREMIÈRE



DOUBLE  
HEAD  
DESIGN

**LITHIUM**  
FACIAL HAIR REMOVER  
WITH TITANIUM BLADE



ELLE  
PREMIÈRE



**LITHIUM**  
FACIAL HAIR REMOVER  
WITH TITANIUM BLADE



ELLE  
PREMIÈRE



IPX7  
WATERPROOF

**LITHIUM**  
BODY TRIMMER  
600mAh LITHIUM BATTERY



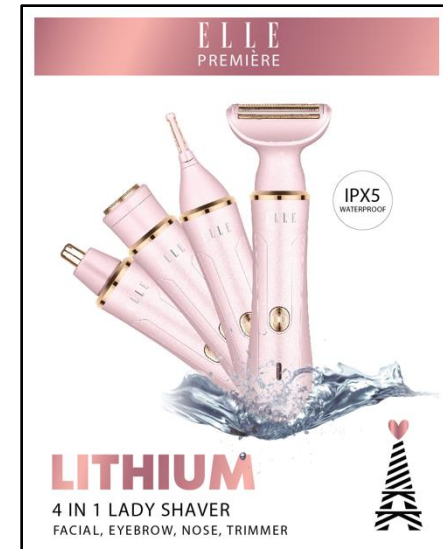
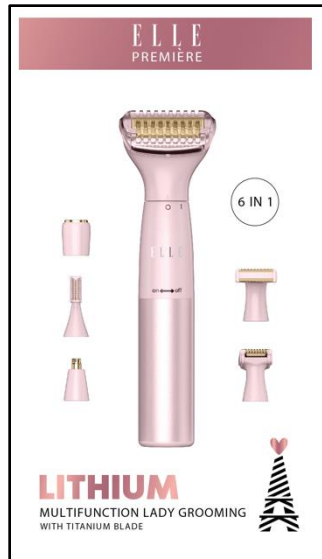
ELLE  
PREMIÈRE



IPX7  
WATERPROOF

**LITHIUM**  
3 IN 1 LADY GROOMING  
WITH TITANIUM BLADE





# LADIES PERSONAL CARE





**Item : EL121**

### FEATURES:

- High quality stainless steel
- Ergonomic Rubber handles for comfortability
- Creates voluminous curled eyelashes
- Achieve long & lasting curls



**Item : EL121-PNK**

### FEATURES:

- Grabs every lash with precision
- 2 replacement pads provides comfortable cushion
- Ergonomic rubber handles for extra comfort
- Creates beautiful voluminous long lasting curls
- High quality stainless steel



**Item : EL121-PUR**

### FEATURES:

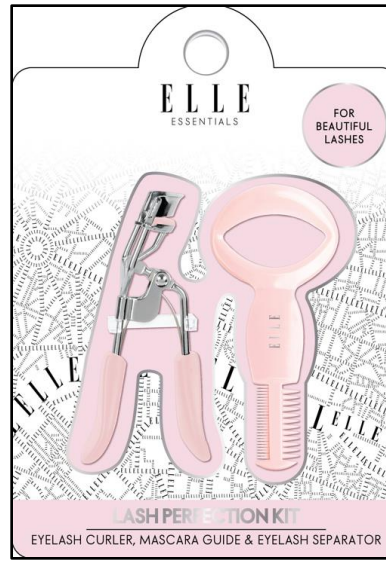
- Grabs every lash with precision
- 2 replacement pads provides comfortable cushion
- Ergonomic rubber handles for extra comfort
- Creates beautiful voluminous long lasting curls
- High quality stainless steel



**Item : EL521**

### FEATURES:

- Ensures clump-free lashes with perfect separation
- Tame and shape brows for a flawless finish
- Dual-purpose tool for precise brow shaping and lash separation
- Gently curls lashes for a long lasting voluminous look
- Precision brush for defining brows and blending
- Extra soft pads for comfortable curling and long lasting use



**Item : EL131**

### FEATURES:

- Achieve beautifully curled lashes with every use, creating a natural, long-lasting curl
- Designed with an easy-to-hold, non-slip handle for maximum control and comfort during use
- Curves to fit all easy-to-hold, non-slip handle for maximum control and comfort during use
- Curves to fit all eye shapes, providing a perfect curl from corner to corner
- Clump-free application the precision separator combs through lashes, ensuring even mascara distribution and preventing clumps



**Item : EL145**

### FEATURES:

- Achieve beautifully curled lashes with every use, creating a natural, long-lasting curl
- Designed with an easy-to-hold, non-slip handle for maximum control and comfort during use
- Curves to fit all easy-to-hold, non-slip handle for maximum control and comfort during use
- Curves to fit all eye shapes, providing a perfect curl from corner to corner
- Clump-free application the precision separator combs through lashes, ensuring even mascara distribution and preventing clumps





**Item : EL122**

### FEATURES:

- Slant tweezer features the perfect angle to expertly shape your brows
- Classic lash curler gives you natural lashes and a beautiful curl
- Compact mirror perfect for on-the-go touch-ups



**Item : EL1225**

### FEATURES:

- Effectively & gently removes unwanted peach fuzz facial hair
- Improves skin care product absorption & allows smoother makeup application
- Special designed handle for a closer precise shave
- Safety caps included to protect blades & keeps bacteria away



**Item : EL124**

### FEATURES:

- Ideal for removing unwanted hair & peach fuzz from upper lip, chin, cheeks & neck
- Achieve precise eyebrow shaping & gentle bikini trimming
- Rinseable stainless steel blades for easy cleaning
- Portable & sleek design; designed for controlled dermaplaning





**Item : EL134**

### FEATURES:

- Slant tip defines browns
- Point tip precisely extracts fine or hard-to-reach hair
- Precision-ground tips are permanently aligned to grasp hair
- Stainless steel tweezers are durable for long-lasting use



**Item : EL435**

### FEATURES:

- Ultra- sharp, fine precision blades for smooth and even exfoliation
- Ergonomic handle provides a comfortable, secure grip for effortless use
- Helps remove dead skin cells and unwanted hair, leaving your skin silky smooth
- Slim design perfect for on-the-go use or travel
- Gentle remove facial hair and peach fuzz in the direction of hair growth
- Shape, clean up, and groom brows



**Item : EL436**

### FEATURES:

- Ultra- sharp, fine precision blades for smooth and even exfoliation
- Ergonomic handle provides a comfortable, secure grip for effortless use
- Helps remove dead skin cells and unwanted hair, leaving your skin silky smooth
- Slim design perfect for on-the-go use or travel
- Gentle remove facial hair and peach fuzz in the direction of hair growth
- Shape, clean up, and groom brows



**Item : EL126**

### FEATURES:

- Effectively & gentle removes unwanted peach fuzz facial hair
- Improves skin care product absorption & allows smoother makeup application
- Special designed handle for a closer precise shave
- Safety caps included to protect blades & keeps bacteria away



**Item : EL430**

### FEATURES:

- Durable stainless steel construction ensures these nail clippers are rust-resistant and built to last for years of reliable use
- The sharp, precise blades effortlessly trim mails with clean, smooth cuts for a professional finish
- The ergonomic design features comfortable, non-slip handles that provides a secure grip for easy and controlled use
- Perfect for fingernails & toenails, these clippers are designed to work seamlessly on both hands and feet



**Item : EL129-RG**

### FEATURES:

- Precision blades : sharp, stainless steel blades designed for accurate, clean trimming of cuticles
- Ergonomic grip : comfortable, non-slip handle for easy control and a steady trim
- Compact & travel friendly : lightweight and compact design, perfect for on-the-go grooming
- Smooth, clean finish: Trims cuticles and dead skin with ease, leaving nails looking neat



**Item : EL129-RG**

### FEATURES:

- Precision blades : sharp, stainless steel blades designed for accurate, clean trimming of cuticles
- Ergonomic grip : comfortable, non-slip handle for easy control and a steady trim
- Compact & travel friendly : lightweight and compact design, perfect for on-the-go grooming
- Smooth, clean finish: Trims cuticles and dead skin with ease, leaving nails looking neat



**Item : EL329**

### FEATURES:

- Precision blades : sharp, stainless steel blades designed for accurate, clean trimming of cuticles
- Ergonomic grip : comfortable, non-slip handle for easy control and a steady trim
- Compact & travel friendly : lightweight and compact design, perfect for on-the-go grooming
- Smooth, clean finish: Trims cuticles and dead skin with ease, leaving nails looking neat

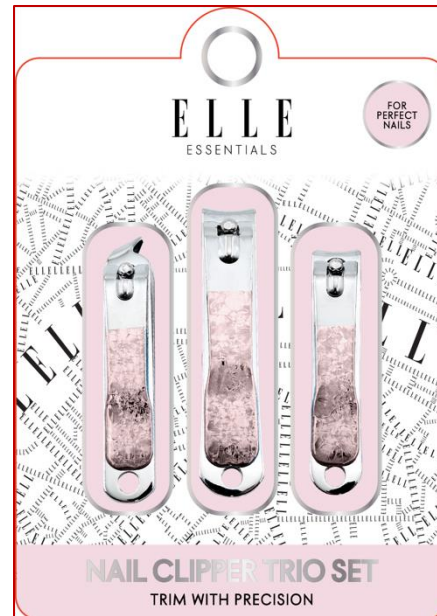




**Item : EL330**

### FEATURES:

- Perfect for precise trimming of fingernails and hard-to reach areas
- Designed for effortless trimming of toenails with a comfortable grip
- Ideal for a clean, angled cut, offering added control and precision
- Strong, rust-resistant construction for long-lasting performance
- Easy –to-hold handles for comfortable, controlled use



**Item : EL133**

### FEATURES:

- Perfect for precise trimming of fingernails and hard-to reach areas
- Designed for effortless trimming of toenails with a comfortable grip
- Ideal for a clean, angled cut, offering added control and precision
- Strong, rust-resistant construction for long-lasting performance
- Easy –to-hold handles for comfortable, controlled use



**Item : EL432**

### FEATURES:

- Gently curls lashes for a long-lasting voluminous look
- Effectively & gently removes unwanted peach fuzz facial hair
- Ideal for removing unwanted facial hair, shaping eyebrows, or plucking ingrown hairs
- For precise blending
- Compact mirror great for touch-ups on-the-go





**Item : EL334**

**FEATURES:**

- Ideal for shaping eyebrows, removing larger hairs and general grooming
- Perfect for precision tasks like removing ingrown hairs or splinters
- Durable and rust-resistant for long-lasting use
- Non-slip handles for maximum control and comfort
- Achieve precise results with both tools designed for accuracy
- Simply sanitize after use for hygienic maintenance



**Item : EL328**

**FEATURES:**

- For trimming nails with precision
- Perfect for hard-to-reach areas and detailed trimming
- For trimming cuticles with ease and accuracy
- Gently pushes back cuticles for a clean and polished look
- Ideal for precision grooming and removing stray hairs
- Shapes and smooths nail edges for a flawless finish



Item : EL137

### FEATURES:

- Compact and portable
- Handbag-friendly and great for travel
- Tweezers are ideal for removing unwanted facial hair, shaping eyebrows, or plucking ingrown hairs
- Includes slant tip, flat edge, slanted point & precision tweezers
- Compact mirror great for touch-ups on-the-go



Item : EL136

### FEATURES:

- File, buff, polish, and add shine to your nails with this 4-sided buffering block that is perfect for manicures and pedicures
- 4 files on one file, buff, polish & shine your nails easy to use gentle on nails



Item : EL139

### FEATURES:

- Versatile set, includes 4 different tweezers: slant, pointed, flat, and angled tips for every need
- Ultra-fine, perfectly aligned tips for accurate plucking and grooming
- Made for high quality, rust-resistant stainless steel for long lasting use
- Ideal for eyebrows, ingrown hairs, splinters, and precise crafting tasks
- Simple to sanitize for hygienic use every time
- Compact design for easy storage and portability



**Item : EL227**

### FEATURES:

- Great for shaping, filing, trimming and creating your flawless nail look
- 2x nail files for easy filing
- Nail brush gently & effectively clean nails
- 2x nail clippers for neat cuticles
- Compacted and travel-friendly



**Item : EL291**

### FEATURES:

- Removes hard and rough skin, leaving feet feeling smooth and soft
- Exfoliates and smooths hard, and callused skin
- Gentle and effective
- Ergonomic handle provides a comfortable grip
- Easy to rinse
- Hang hole for convenient storage



**Item : EL140**

### FEATURES:

- Pumice stone gently exfoliates, removes hard and dry skin, leaving skin feeling smooth and soft
- Nail brush with soft bristles helps clean and massage your feet





**Item : EL438**

### FEATURES:

- Keeps feet soft and smooth
- Helps remove tough calluses
- Two filing surfaces
- Non-slip handle



**Item : EL437**

### FEATURES:

- Foot file gently smooths rough, calloused skin for soft, touchable feet
- Exfoliating pumice stone buffs away dead skin and revitalizes feet leaving them feeling refreshed and rejuvenated
- Nail clipper precision cutting for neat and well-maintained toenails
- Nail brush cleans under nails and feet to remove dirt and impurities
- 2X toe separator keeps toes comfortable and separated during polishing for a flawless finish



**Item : EL165**

### FEATURES:

- High quality stainless steel
- Durable & anti rust
- Gently & safely clears clogged pores
- Textured handle for non-slip grip





**Item : EL125**

### FEATURES:

- Ideal for removing unwanted hair & peach fuzz from upper lip, chin, cheeks & neck
- Achieve precise eyebrow shaping & gentle bikini trimming
- Rinseable stainless steel blades for easy cleaning



**Item : EL128**

### FEATURES:

- Effectively & gentle removes unwanted peach fuzz facial hair
- Improves skin care product absorption & allows smoother makeup application
- Special designed handle for a closer precise shave
- Safety caps included to protect blades keeps bacteria away



**Item : EL126**

### FEATURES:

- Effectively & gentle removes unwanted peach fuzz facial hair
- Improves skin care product absorption & allows smoother makeup application
- Special designed handle for a closer precise shave
- Safety caps included to protect blades keeps bacteria away





Item : EL130

### FEATURES:

- High Quality stainless steel
- Ultra sharp curved cutting edge
- Achieve precise and clean cut every time



Item : EL138

### FEATURES:

- Portable stainless steel manicure & pedicure set
- Comes with all the essentials for a perfect manicure & pedicure at home or on-the-go



Item : EL132

### FEATURES:

- Buffs away calluses and hard dry skin
- Gives equally good results on both dry and wet feet
- Made with professional grade stainless steel to remove dead skin safely and painlessly

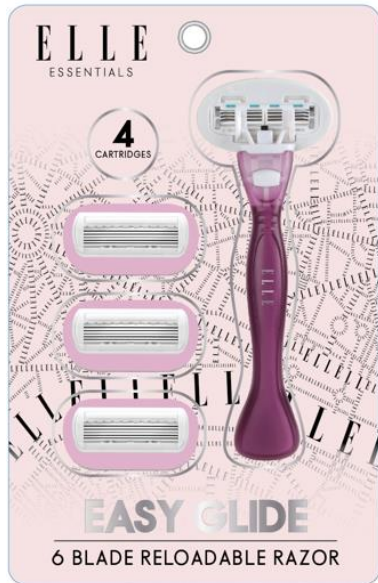


Item : EL292

### FEATURES:

- Removes unwanted hair blade-free. Painless hair removal that helps to slow down hair growth
- Allows hair to clump & break from the surface when rubbed against skin. Designed to slow hair regrowth over several sessions
- Easy to use design & ergonomic grip; includes 2 remover hair tools





**Item : EL182**

### FEATURES:

- Delivers a smooth, close shave that lasts; includes 4 cartridges
- Water- activated to bringing a smooth glide along body without irritation, bumps or redness
- Designed with a soft-grip gel for easy control pivoting design that adjusts to your body's contours



**Item : EL183**

### FEATURES:

- Stainless steel blades delivers a smooth, close shave that lasts
- Water- activated to bringing a smooth glide along body without irritation, bumps or redness
- Designed to ensure steadiness while shaving
- Pivoting head design allows blade to follow the curves of your body



**Item : EL184**

### FEATURES:

- Delivers a smooth, close shave that lasts
- Water- activated to bringing a smooth glide along body without irritation, bumps or redness
- Designed with a soft-grip gel for easy control pivoting design that adjusts to your body's contours





**Item : EL6001**

### FEATURES:

- Adjustable vibration massage function, simple and convenient operation for better cleaning and relaxation
- Soft and skin friendly. Feels great while cleansing, exfoliating and massaging
- Reaches all the hard-to-reach areas while deeply cleansing skin
- Non-slip handle can be easily stored and comfortable to hold. Hanging hole design allows the brush to be hung in your desired place



**Item : EL175**

### FEATURES:

- Enhances the benefits of your daily facial cleanser
- Provides light and relaxing facial massage while gently exfoliating skin
- Silicone side helps clear dead skin
- Bristle side helps clear trapped oil & bacteria from pores

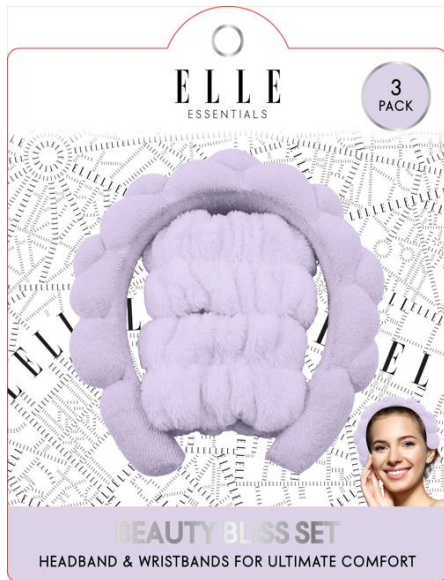


**Item : EL366**

### FEATURES:

- Deeply cleanses & exfoliates your face
- Removes makeup, dirt & oil
- Leaves skin feeling smooth & looking fresh
- Use with your favorite facial cleanse
- Finger size mitt for easy handling & precise motion
- Soft material is gentle enough for daily use

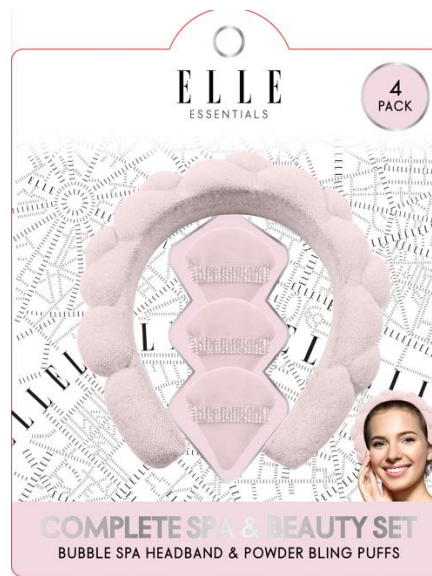




**Item : EL373**

### FEATURES:

- Soft, gentle fabric designed to pamper your skin during beauty routines
- Ideal for keeping hair in place while enjoying a facial mask
- Includes a plush headband and two wristbands, perfect for any at-home beauty or spa ritual
- Breathable, non-irritating material to ensure a comfortable, relaxing experience every time



**Item : EL374**

### FEATURES:

- Keep your hair out of your face with this soft luxurious spa headband
- Enjoy your skincare routine without worry of getting your hair wet with water or skincare products
- Makeup puffs made from ultra soft fabric that gently applies powder for a smooth and flawless finish

**Item : EL367**





**Item : EL376**

### FEATURES:

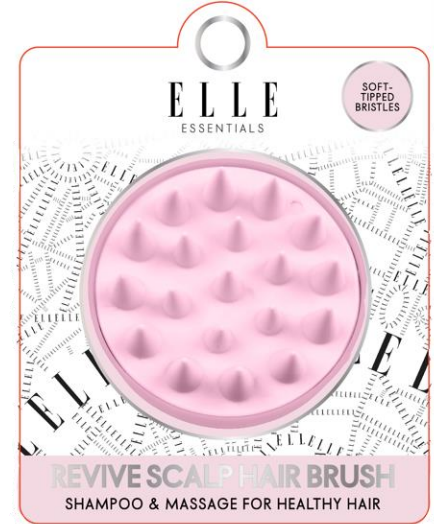
- Deep exfoliation- the loofah and exfoliating gloves remove dead skin cells, leaving skin smooth and refreshed
- Gentle & effective- soft yet durable materials provide a gentle scrub without irritating skin
- Reusable & durable- built to last, each piece is designed for multiple uses to maintain your skincare routine



**Item : EL375**

### FEATURES:

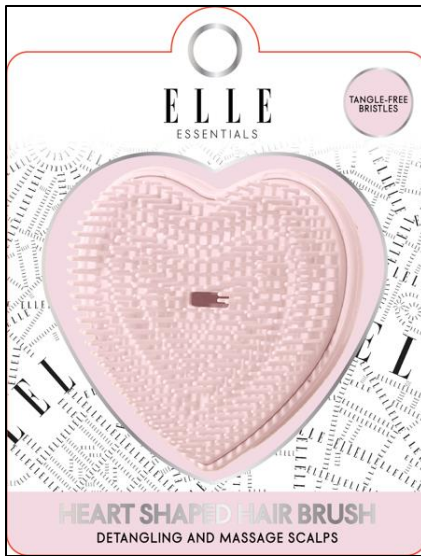
- The scalp massage- the scalp massager gently massages, promoting relaxation and healthier hair
- The bubble headband comfortably holds hair in place while keeping your skin free from hair product during skincare or spa routines.
- Made with soft, high-quality materials for long-lasting comfort



**Item : EL1003**

### FEATURES:

- Stimulates circulation while providing a soothing massage for a relaxed, refreshed scalp
- Soft, flexible bristles effortlessly detangle hair without pulling or causing damage
- Perfect evenly distributing hair products, promoting healthier hair and a cleaner scalp



**Item : EL1019**

### FEATURES:

- Stimulates circulation while providing a soothing massage for a relaxed, refreshed scalp
- Soft, flexible bristles effortlessly detangle hair without pulling or causing damage
- Perfect for evenly distributing hair products, promoting healthier hair and a cleaner scalp



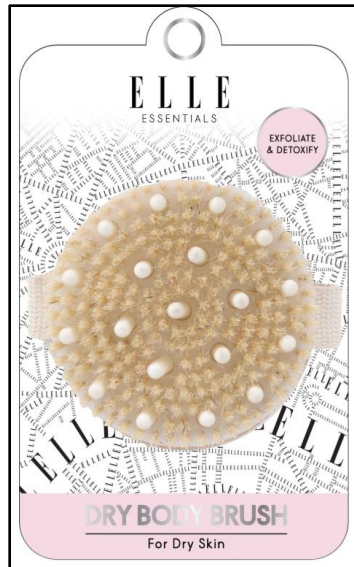
**Item : EL1230**

### FEATURES:

- Includes 3 standard size shower caps that come in a mix of colorful prints
- Protects your hair in between washes
- Elastic edge keeps cap in place for a secure comfortable fit, durable, and lightweight
- Fit for most head sizes







**Item : EL337**

### FEATURES:

- Elevates your everyday body care routine by exfoliating the skin for smooth & radiant skin



**Item : EL365**

### FEATURES:

- Gently exfoliates and buffs away dryness to reveal soft and glowing skin
- Dual textured: use the textured side to exfoliate and soften skin; and smooth side to cleanse and moisturize
- Use with our favorite face or body cleansers





**Item : EL367**

### FEATURES:

- Made with gentle exfoliating fabric
- Use with your favorite body cleansers and scrubs for all-over cleanse
- Gentle on skin
- Provides gentle exfoliation that is safe for all skin types
- Fits and conforms to most hand sizes



**Item : EL368**

### FEATURES:

- Great for hard to reach areas
- Dual sided scrubber helps remove dead skin
- Hand loops for easy use
- Instantly removes dry skin



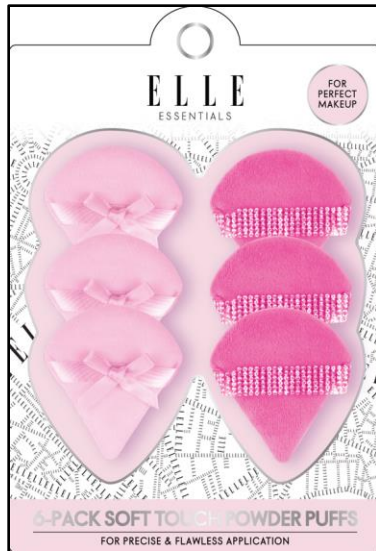
**Item : EL369**

### FEATURES:

- Great for hard to reach areas
- Dual sided scrubber helps remove dead skin
- Hand loops for easy use
- Instantly removes dry skin

# LADIES COSMETIC ACCESSORIES





**Item : EL159**

### FEATURES:

- Gently applies powder for a smooth, flawless finish
- Ideal for setting makeup or applying loose powder evenly
- Soft, non-irritating material suitable for all skin types
- Perfect for face, body and touch-ups on-the-go
- Multiple puffs for home, travel, or sharing with friends



**Item : EL160**

### FEATURES:

- Designed with ultra-soft materials to care for your skin
- Sustainable puffs that can be washed and reused, reducing waste
- Quickly and effectively removes makeup, dirt and oil
- Puffs dry quickly after use
- Works seamlessly with creams, oils or water based cleansers
- Perfect for removing makeup, applying toner or gentle exfoliation





**Item : EL850**

**FEATURES:**

- Kabuki brush for blending liquid and powder



**Item : EL712**

**FEATURES:**

- Helps you achieve a dewy, natural eye-look
- Brushes can be used with liquid, cream, powder & stick eyeshadow & liner



**Item : EL179**

### FEATURES:

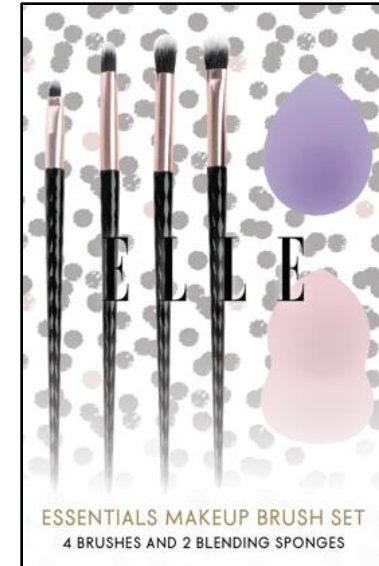
- Use with foundation, concealer, mineral, or cream-based makeup
- Pointed tip allows for accuracy
- Wide & round end spreads makeup efficiently & evenly
- Tear drop sponge used for optimal makeup application
- Hourglass sponge used to blend hard to reach areas & touch ups



**Item : EL1279**

### FEATURES:

- Use with foundation, concealer, mineral, or cream-based makeup
- Pointed tip allows for accuracy
- Wide & round end spreads makeup efficiently & evenly
- Perfect for contouring & blending in hard reach areas



**Item : EL741**

### FEATURES:

- Great for applying eyeliner along the top and bottom lash lines, adding eyeshadow to line the eyes
- Blends and softens eyeshadow for a professional finish
- Seamlessly blend and diffuse eyeshadow
- Ideal for sculpting brows and creating sharp liner looks
- Flawlessly applies makeup for even and smooth-looking skin. Best used with liquid or cream foundations. Sponge is washable and reusable
- Great touch-ups. Best used with liquid or cream foundations. Sponge is washable and reusable



**Item : EL742**

**FEATURES:**

- Essential brushes to apply your makeup daily
- Perfect for a natural or more dramatic look
- Brushes are soft to the touch and blend makeup evenly



**Item : EL744**

**FEATURES:**

- Essential brushes to apply your makeup daily
- Perfect for a natural or more dramatic look
- Brushes are soft to the touch and blend makeup evenly



**Item : EL749**

**FEATURES:**

- Essential brushes to apply your makeup daily
- Perfect for a natural or more dramatic look
- Brushes are soft to the touch and blend makeup evenly







**Item : EL740**

### FEATURES:

- To blend eyeshadow into the crease of the eye
- To apply eyeshadow in more precise areas, such as the crease or corners
- To apply base shadow over the entire eyelid
- To create a straight and even line using compact or loose powder or gel liner
- To create especially thin lines in a precise area with complete coverage



**Item : EL710**

### FEATURES:

- Best used with powder foundation, powder bronzers, & setting powders
- For precise application and blending make it the perfect tool for blush & contour
- Tapered to pick up and diffuse loose setting powders
- For a light and smooth application
- Effortlessly blend eyeshadow
- Perfect for contouring
- For sheet application and smooth blending of powder shadow
- Flawlessly applies makeup for even & smooth-looking skin best use will liquid or cream foundations. Sponge is washable & reusable
- Great for touch-ups. Best use with liquid or cream foundations
- With open top allows handy access to any tools or brushes

ELLE  
PREMIÈREDRY ME  
UPSIDE  
DOWN

FLOATING FLAWLESSLY

7 PIECE MAGNETIC BRUSH SET

*Item : EL957***FEATURES:**

- 7 Piece brush set: powder brush, blush brush, foundation brush, brush concealer, eye-shadow brush, smudge brush, and blending brush
- Magnetic brush holder stand
- Organize your brushes while protecting bristles
- Helps with drying after cleaning

ELLE  
PREMIÈRE



**Item : EL605**

#### FEATURES:

- Included 5-pair sets lets you try different styles and look amazing each time
- Bonus eyelash adhesive and applicator included
- Lightweight and reusable
- Easy to apply



**Item : EL608**

#### FEATURES:

- Included 8-pair sets lets your try different styles and look amazing each time
- Bonus eyelash adhesive and applicator included
- Lightweight and reusable
- Easy to apply



**Item : EL612**

#### FEATURES:

- Included 12-pair sets lets you try different styles and look amazing each time
- Bonus eyelash adhesive and applicator included
- Lightweight and reusable
- Easy to apply







**Item : ELSO03**

### FEATURES:

- 28 pack almond assorted nails
- Different sizes to fit all nail beds
- Flawless fit
- Non damaging
- Easy glue application
- Waterproof, smudge proof
- No drying time needed



**Item : ELCN06**

### FEATURES:

- 28 pack almond assorted nails
- Different sizes to fit all nail beds
- Flawless fit
- Non damaging
- Easy glue application
- Waterproof, smudge proof
- No drying time needed



**Item : ELAD09**

### FEATURES:

- 28 pack almond assorted nails
- Different sizes to fit all nail beds
- Flawless fit
- Non damaging
- Easy glue application
- Waterproof, smudge proof
- No drying time needed



**Item : ELAD10**

### FEATURES:

- 28 pack almond assorted nails
- Different sizes to fit all nail beds
- Flawless fit
- Non damaging
- Easy glue application
- Waterproof, smudge proof
- No drying time needed

# ELLE LED BEAUTY MIRROR





**Item : EL1102**

### FEATURES:

- 16 bright LED lights
- Ultra- portable for home or on the go
- Smart touch sensor to adjust brightness
- Built-in kickstand offers adjustable angle for easy viewing
- Easy On/Off touch control
- Requires 4 AA batteries (not included)



**Item : EL1302**

### FEATURES:

- 16 bright LED lights provide a great brightness for makeup
- 180 tilt rotation
- Storage tray for small accessories and cosmetics
- Requires 3 AAA batteries (Not Included)



**Item : EL1002**

### FEATURES:

- 16 bright LED lights
- Easy On/Off touch control
- 180° tilt rotation
- Storage tray for small accessories and cosmetics
- Requires 3 AAA batteries (not included)





**Item : EL1967**

### FEATURES:

- 6 super-bright LED lights
- Smart touch sensor button
- 2 adjustable modes for precision lighting
- Full 360° swivel
- Tilting design for easy viewing at any angle
- Freestanding design
- 14° mirror size
- Operates on 4 AA batteries ( not included)



**Item : EL1410**

### FEATURES:

- Natural soft lights for precise make up application
- Portable & cordless
- Installs in seconds with sturdy suction cups that stick to any mirror
- Ultra-bright LED illumination for Hollywood glamour in the comfort of your home
- Energy saving LED bulbs stay cool and last up to 10,000 hours
- Requires 4 AA batteries ( not included)



**Item : EL2420**

### FEATURES:

- 3 light modes-choose from white, & warm lightening for the perfect glow every time
- Built-in wireless speaker- connect your phone or device to stream your favorite music while you get ready
- Durable metal frame- a sleek, sturdy frame for long-lasting



**Item : EL1307**

### FEATURES:

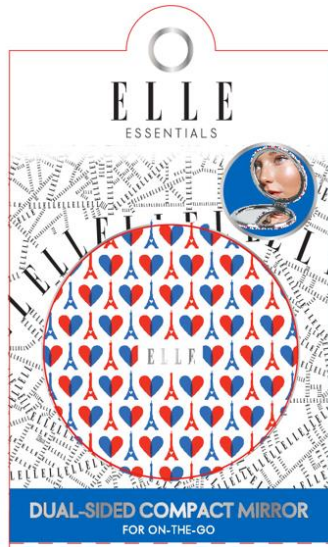
- 22 ultra bright LEDs for superior illumination to enhance your vanity experience
- Built-in cosmetic storage- to easily store & organize small accessories & cosmetics
- 3 mirror panels with 1x, 2x, & 3x magnification to help easily & precisely apply makeup
- Effortlessly adjust light intensity by pressing & holding the on button for a custom glow
- Operates on 4 AA batteries(not included)



**Item : EL1107**

### FEATURES:

- 22 ultra bright LEDs for superior illumination to enhance your vanity experience
- Built-in cosmetic storage- to easily store & organize small accessories & cosmetics
- 360° swivel rotation, horizontal, vertical & full tilt
- Effortlessly adjust light intensity by pressing & holding the on button for a custom glow
- Operates on 4 AA batteries(not included)



***Item : EL342***

**FEATURES:**

- Compact and portable
- Handbag – friendly and great for travel
- Compact mirror great for touch-upson-the-go

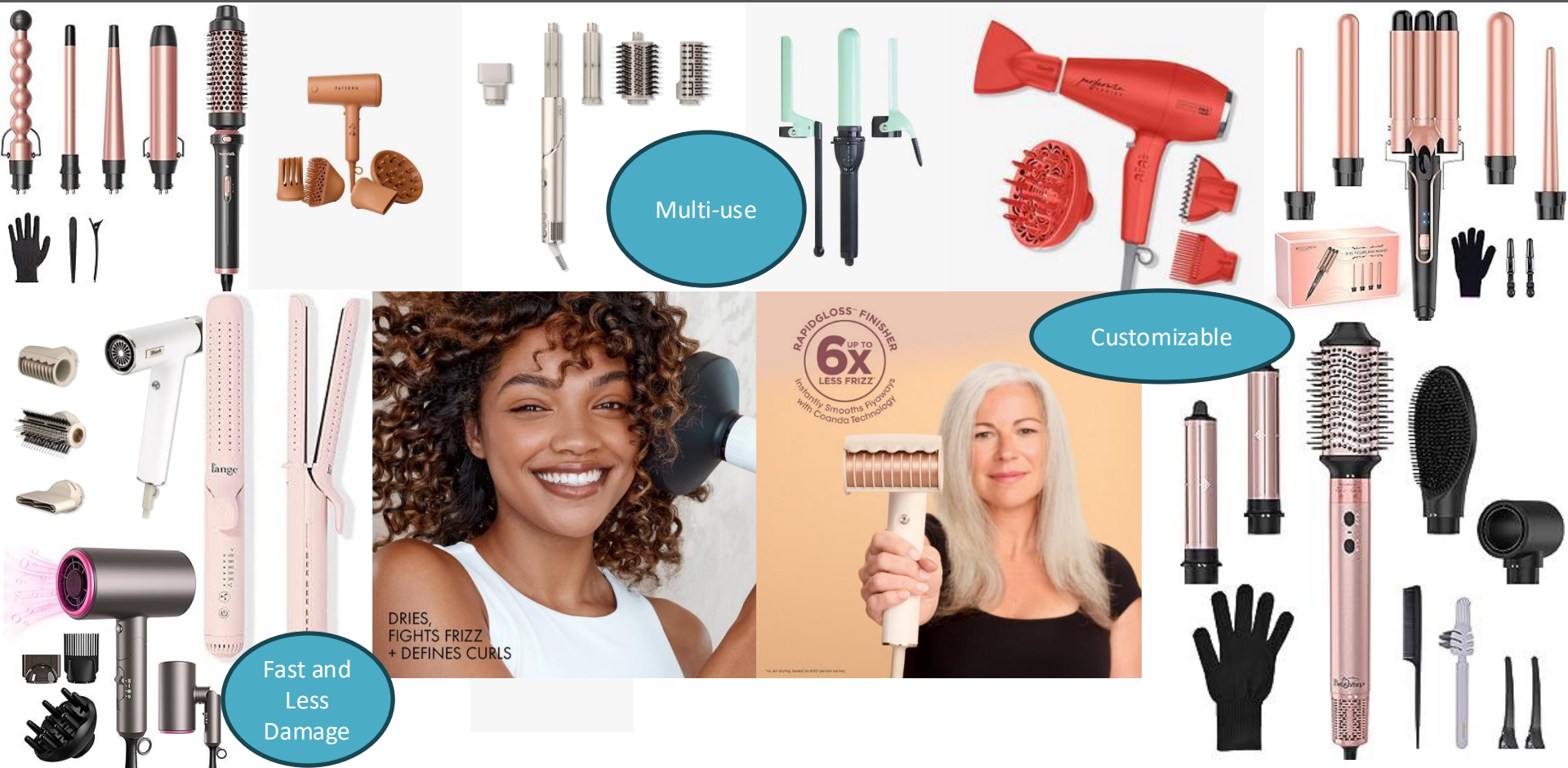




# ELLE HAIR TOOLS



# HAIR TOOL MARKET TRENDS



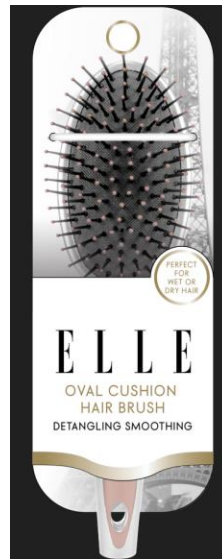
Guests are looking for customization in settings, they need results quickly, and they want improved hair health. The trend in hair tools is to offer flexibility and inclusivity to satisfy the guest. Multi-use tools allow the guests to achieve varied styles. Most tools are offering multiple settings and lcd displays allowing the guest to customize to the exact needs of their hair texture and length.



**Item : EL1001**

### FEATURES:

- Bristles and firm base contribute to a pain free detangling experience
- Effortlessly glides through and smooths knotty hair
- Detangles wet and dry hair with ease
- Ergonomic grip for easy handling
- Perfect for all hair types
- Portable size is perfect for travel and On-the-go



**Item : EL1012**

### FEATURES:

- Reduces appearance of frizz while leaving hair looking smooth and shiny
- Detangles wet and dry hair
- Flexible bristles helps brush gently glide through hair for a tug-free experience
- Easy-grip handle for extra comfort
- Hangs from handle for simple storage
- Perfect for any hair length and type



**Item : EL1016**

### FEATURES:

- Smooths and tames fussy fly-away and loosen curls
- Large rectangle brush helps to reach a broader area of hair with each stroke
- Flexible bristles helps brush gently glide through hair for a tug-free experience
- Non-slip rubberized handle for extra comfort & easy handling
- Hangs from handle for simple storage
- Can be used on wet or dry hair
- Perfect for any hair length and type





**Item : EL1023**

### FEATURES:

- Spaces in base are perfect for airflow and prevent hair damage
- Stiff bristles allow hair to dry more efficiently when using a blow dryer
- Perfect for a quick blow-dry
- Contoured base hugs the curves of your head
- Detangles wet and dry hair
- Textured non slip grip for easy handling
- Hangs from handle for simple storage
- Perfect for any hair length and type



**Item : EL1024**

### FEATURES:

- Includes a full-size and mid-size vent hair brush
- Keep at home or carry-on for styling on-the-go
- Helps reduce frizz and tugging during styling
- Smooth and straighten
- Heat resistant bristles
- Perfect for quick blow-dry styling with vents for fast drying
- Easy-grip handles for comfortable brushing and secure grip



**Item : EL8110-BLK**

### FEATURES:

- Creates beautiful long lasting straight hair
- Even heat for superior results & help eliminates frizz
- Leaves hair looking smooth & shiny
- 1' ceramic tourmaline floating plates
- Fast heat-up
- 430°F highest heat setting for quick styling
- Easy On/Off switch & power indicator
- 360° swivel cord for a tangle-free styling experience



**Item : EL8110-WHT**

### FEATURES:

- Creates beautiful long lasting straight hair
- Even heat for superior results & help eliminates frizz
- Leaves hair looking smooth & shiny
- 1' ceramic tourmaline floating plates
- Fast heat-up
- 430°F highest heat setting for quick styling
- Easy On/Off switch & power indicator
- 360° swivel cord for a tangle-free styling experience



**Item : EL8124**

### FEATURES:

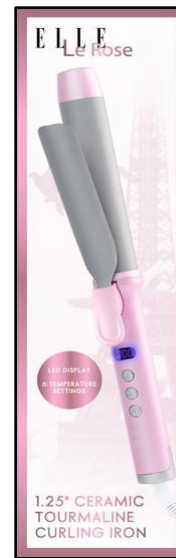
- Features infrared technology to improve overall health of hair using balanced heat from room to end
- Creates beautiful long lasting straight hair
- Even heat for superior results & help eliminates frizz
- Leaves hair looking smooth & shiny
- 1" ceramic coated floating plates release negative ions provide more shine & healthy looking hair
- Quick heat up 7 even heat
- 5 heat settings with 430°F being highest heat setting for quick styling



**Item : EL8210**

### FEATURES:

- Creates beautiful medium to large long-lasting curls
- Helps eliminate frizz for silky-smooth curls
- Even heat for superior results
- Smooth ceramic surface for high quality performance



**Item : EL8202**

### FEATURES:

- Ceramic pearl tong allows heat to be evenly distributed throughout your hair
- LED panel to view temperature of curling iron
- 6 temperature settings for all hair types & textures 220F, 250F, 285F, 320F, 360F & 400F
- Quickly heats up for quick and efficient hair styling
- Swivel power cord for easy mobility while curling hair



**Item : EL8221**

### FEATURES:

- Can be used on wet or dry hair
- Smooth ceramic coating distributes heat evenly and help to eliminate frizz
- LCD display with 7 heat settings for use on different hair types
- 360 swivel degree cord for easy use
- 410 F maximum temperature
- Creates beautiful long-lasting curls



Item : EL8310

## FEATURES:

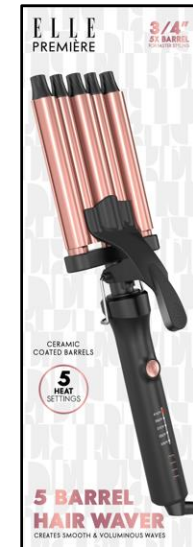
- ½" to 1" tapered barrel to create a variety of styles
- Helps eliminate frizz for silky smooth curls
- Creates beautiful tight & loose curls
- Distributes heat evenly to every section of the curl
- Easy on/off switch & power indicator
- Includes a heat protective glove for easy styling
- 400°F highest heat setting long-lasting curls
- 30 second heat-up
- 6ft & 360° swivel cord for a tangle-free styling experience



Item : EL8280

## FEATURES:

- No cord makes it easy to style at home or on-the-go
- Large 5" barrel lets you create your curls with even heat distribution
- Multiple heat settings puts you in control and works with most hair types
- Helps protect and cool down your hair tool making it more travel friendly
- Over 45 minutes of run time
- Recharge internal battery with provided USB cord



Item : EL8310

## FEATURES:

- 5 barrels for ultra-fast hair styling
- 410°F highest heat
- 3/4 inch barrel diameter
- 5 temperature settings
- 330°F, 350°F, 370°F, 390°F, 410°F
- Ceramic coated barrels for even consistent heat
- 1 hour auto shut –off
- Metal safety stand
- Cool tip textured grip heads
- 360° swivel cord for easy use





**Item : EL8741**

## FEATURES:

- Create flawless curls and waves at the push of a button.
- Dual directional buttons
- Digital temperature display offers easily adjustable temperature settings up to 400F
- 3 interchangeable heads, ¾", 1", 1 ¼"
- Ceramic heat technology spreads heat evenly causing less damage due to hot spots and smooths out the hair
- Full memory temperature setting
- 1-hour auto shut off
- Worldwide voltage - 100V-240V
- 9' long and 360 swivel cord



**Item : EL8473**

## FEATURES:

- Create flawless curls and waves at the push of a button.
- Dual directional buttons
- Digital temperature display offers easily adjustable temperature settings up to 400F
- 3 interchangeable heads, ¾", 1", 1 ¼"
- Ceramic heat technology spreads heat evenly causing less damage due to hot spots and smooths out the hair
- Full memory temperature setting
- 1-hour auto shut off
- Worldwide voltage - 100V-240V
- 9' long and 360 swivel cord



**Item : EL8117-BLK**

## FEATURES:

- Space saving 3-in-1 design; great for travel & on-the-go
- All in one styling tool creates waves & curls
- Create every look with just one tool
- Easy to use tool allows you to create beautiful curls, waves & straight hair effortlessly
- 400°F highest heat setting for long lasting curls or smooth straight hair
- Eliminate frizz
- 360° swivel cord for a tangle-free styling experience



**Item : EL7250-WHT**

### FEATURES:

- Dual temperature settings
- 3 easy beautiful looks
- Curls, waves , and straightens hair
- Quick heat up
- Easy on/off switch
- 6ft swivel cord



**Item : EL7280**

### FEATURES:

- Features infrared technology to improve overall health of hair using balanced heat from root to end
- Heat-up to 374°F provide a variety of styling options
- Styles & volumizes your hair in one easy step to achieve a salon-quality blowout from home
- Ceramic-coated barrel released negative ions provide more shine & healthy-looking hair
- Delivers smooth, full column & bounce
- 60 minutes auto shut off
- 360° swivel cord for a tangle-free experience



**Item : EL8519**

### FEATURES:

- Heated ceramic bristles help detangle and straighten all in one step
- LCD display with multiple heat settings on different hair types
- Ceramic coating distributes heat evenly and helps to eliminate frizz & achieve shiny hair
- Fast heat-up for quick styling
- Heats up to 400° maximum temperature
- 360° swivel degree cord for easy use
- For all hair types



**Item : EL8422**

### FEATURES:

- Four adjustable heat settings ( 280 F,320 F,360 F,400 F) to suit all hair types and looks
- Three 1" tourmaline ceramic barrels create medium 's' waves in minutes
- Ceramic barrels help reduce frizz & add shine
- 6ft swivel cord for a tangle-free styling experience
- Foldaway safely stand helps protect counter tops when tool is not in use



**Item : EL8707**

### FEATURES:

- Ionic technology helps leave hair looking conditioned & smooth while reducing frizz & static
- 2 heat settings & cool shot feature provide a variety of drying options
- Dries, styles & volumizes your hair in one easy step to achieve a salon-quality blowout from home
- Round brush to create a smooth & shiny blowouts
- 360° swivel cord for a tangle-free experience
- For all hair types



**Item : EL8000**

### FEATURES:

- Ionic technology helps leave hair looking conditioned and smooth while reducing frizz and static
- 2 heat settings & cool shot feature provide a variety of drying options
- Dries, styles and volumizes your hair in one easy step to achieve a salon-quality blowout from home
- Round brush to create a smooth & shiny blowouts
- 360° swivel cord for a tangle-free experience
- For all hair types



**Item : EL8740**

### FEATURES:

- Iconic technology helps leave hair looking conditioned and smooth while reducing frizz and static
- 360° design combines the power and heat of a blower with the shape of a round brush
- Ceramic coating helps protect hair from heat damage by distributing
- Heat evenly while still creating beautiful results
- Lightweight & 360° swivel cord for a tangle-free experience



**Item : EL8940**

### FEATURES:

- 4 attachments to create a variety of customized styles
- Silicone Mat
- 1100W with 2 speed settings and cool shot
- Ceramic technology seals the cuticle for less frizz and tons of shine, up to 430F
- 9' and 360 swivel cord
- Fast heat up for quick styling
- Worldwide voltage - 100V-240V





**Item : EL8750-NOC**

### FEATURES:

- Iconic technology helps leave hair looking conditioned & smooth while reducing frizz and static
- 360° design combines the power and heat of a blower with the shape of a round brush
- Ceramic coating helps protect hair from heat damage by distributing heat evenly while still creating beautiful results
- Lightweight & 360° swivel cord for a tangle-free experience



**Item : EL8750-PNK**

### FEATURES:

- Iconic technology helps leave hair looking conditioned & smooth while reducing frizz and static
- 360° design combines the power and heat of a blower with the shape of a round brush
- Ceramic coating helps protect hair from heat damage by distributing heat evenly while still creating beautiful results
- Lightweight & 360° swivel cord for a tangle-free experience



**Item : EL8111**

### FEATURES:

- Aluminum plates with ceramic coating allows even heat to penetrate through hair. While leaving hair frizz free and silky straight hair
- Floating plates that suit the style your creating
- Simple on/off switch for easy use
- Swivel power cord for easy mobility
- Max temperature of 410°F
- Quickly heats up for quick and efficient hair styling
- Simple storage with lock function



**Item : EL8100**

### FEATURES:

- Aluminum plates with ceramic coating allows even heat to penetrate through hair. While leaving hair frizz free and silky straight hair
- Floating plates that suit the style your creating
- Simple on/off switch for easy use
- Swivel power cord for easy mobility
- Max temperature of 430°F
- Quickly heats up for quick and efficient hair styling
- Simple storage with lock function



**Item : EL8125**

### FEATURES:

- Infrared light protects your hair natural moisture leaving hair smooth and shiny
- Ceramic coating distribute heat evenly and help to eliminate frizz
- LCD display with 5 heat settings for use on different hair types
- 360 swivel degree cord and easy use
- 400 F maximum temperature
- Creates beautiful long-lasting straight hair



**Item : EL8163**

### FEATURES:

- 2 in 1 twisted design allows you to flat iron or curl your hair
- Double ceramic plates distribute heat evenly and help to eliminate frizz
- LCD display with multiple settings for use on different hair types
- Easy twist base to adjust temperatures with ease
- Fast heat up for quick styling
- 360 swivel degree cord and easy use
- 450 F maximum temperature
- Creates beautiful long-lasting straight hair or curls



**Item : EL8180**

### FEATURES:

- Creates even heat distribution for smooth flat iron styling
- Helps protect and cool down your hair tool making it more travel friendly
- No cord makes it easy to style at home or on-the-go
- Multiple heat settings put your in control and works with most hair types
- Over 45 minutes of run time
- Recharge internal battery with provided USB cord



**Item : EL8500**

### FEATURES:

- Creates beautiful long lasting curly hair
- Fast heat-up 410° highest heat setting for quick styling
- 5 temperature settings for all hair types & textures 265°F, 300°F, 340°F, 375°F, & 410°F
- Swivel cord for easy mobility
- Heated bristles for brushing & curling



**Item : EL8782**

## FEATURES:

- Easily dry and straighten all in one
- Refresh your style with a cool breeze for a smooth finish
- Gently dry or style with a soft, low heat
- Ideal for regular drying & styling with moderate heat
- Speed up drying & add volume with higher heat
- Intense heat for quick drying & extra styling power
- Move freely while styling with a 360° swivel cord that prevents tangling & gives you total control
- Simple & intuitive on/off switch for effortless operation



**Item : EL8212**

## FEATURES:

- 1.25" Extra long ceramic barrel styles wide sections, hard-to-reach sections & long hair in one quick pass
- Creates beautiful medium to large long-lasting curls
- Helps eliminate frizz for silky-smooth curls
- Even heat for superior results
- 410° highest heat setting
- Easy on/off button
- Great for all hair types
- Swivel cord for tangle-free styling experience



**Item : EL8581**

## FEATURES:

- Cordless & rechargeable design style freely anytime & anywhere
- 5 heat settings (250 -410°F) . Choose the right temperature for your hair type
- Dual styling function. Straighten or curl with one tool
- LED temperature display. Digital screen shows real-time heat for precision styling
- USB-C charging. Fast and convenient charging with modern USB-C cable
- 30 minute use time
- Lightweight & travel friendly





**Item : EL8425**

### **FEATURES:**

- 5 Barrels for ultra-fast styling
- 410°F Highest heat
- ¾ inch barrel diameter
- 5 temperature settings: 330°F, 350°F, 370°F, 390°F, 410°F
- Ceramic coated barrels for even consistent heat
- 1 hour auto shut-off
- Metal safety stand
- Cool tip textured grip heads
- 360° swivel cord for easy use

**Item : EL8742**



**Item : EL1017**

### FEATURES:

- Finest mist spray bottle provides an even, gentle mist for precise application
- Both the bottle & brush are designed for a comfortable, effortless grip
- This is dual-function set is perfect for use together or separately for hydration, styling, or skincare
- The hair brush soft bristles are gentle on skin or hair & ideal for even distribution of product
- Smooth, soft bristles that glide through hair or skin with ease
- Travel friendly, compact, lightweight and easy to carry on-the-go



**Item : EL463**

### FEATURES:

- Includes a satin curling rod, hair clip and two scrunchies that gently secure your hair
- Satin rods keep your hair frizz- free and prevents breakage
- Creates voluminous curls and waves without heat damage



**Item : EL8410**

### FEATURES:

- ¾" or 1 ¼" diameter extra long spiral barrel
- Ceramic spiral barrel for softer curls
- Helps eliminate frizz for silky smooth curls
- Distributes heat evenly to every section of the curl
- Easy on/off
- 400°F highest heat setting for long lasting curls
- Fast heat up
- 360° swivel cord for a tangle free style experience



**Item : EL8520**

### FEATURES:

- Heated ion ceramic bristles help detangle and straighten hair in one step
- Can be used on wet or dry hair
- LCD display with 3 heat settings for use on different hair types
- Ceramic coating distributes heat evenly and helps to eliminate frizz
- 360 swivel degree cord for easy use
- 400 F maximum temperature
- Creates beautiful long-lasting straight hair



**Item : EL8590**

### FEATURES:

- Uses the power of steam to instantly straighten hair
- Ceramic bristles achieve shiny and frizz free hair
- Leak-free water tank
- LCD temperature display
- Multiple heat settings heat-up to 420°F
- Dual voltage 100-240V: great for travel
- 9ft 360° swivel cord for easy use
- 30 minutes auto shut-off



**Item : EL8926**

### **FEATURES:**

- Hp brush motor, 30,000 RPM
- Blows above weight, delivering 50% more wind power at 18m/s compared to traditional
- Small, easy to store, and portable, less than 400g
- Plasma tech ( emits pos/ neg ions) vs. Negative ions, delivers softer hair and less frizz
- Heating core is away from outlet reducing damage
- 3 temperature settings





**Item : EL8940**

### FEATURES:

- 4 attachments to create a variety of customized styles
- Silicone Mat
- 1100W with 2 speed settings and cool shot
- Ceramic technology seals the cuticle for less frizz and tons of shine, up to 430F
- 9' and 360 swivel cord
- Fast heat up for quick styling
- Worldwide voltage - 100V-240V



**Item : EL8988**

### FEATURES:

- Fast Drying , High speed, High efficiency
- Plasma de-static technology delivers smooth hair
- 4 speeds, (low, med, high, thermal cycling)
- Full body customized aluminum alloy design
- Customized 110,000 RPM brushless high-speed motor with maximum wind speed of 22m/s
- Multi-depth noise reduction, super silent
- 9 foot 360° swivel cord for easy use



**Item : EL8936**

### FEATURES:

- 3 precise heat settings, including a cool shot to suit all hair types
- Long press to activate temperature auto cycling mode
- Styling concentrator & diffuser included
- High speed for ultra fast drying & styling
- Built-in negative ion technology to eliminate frizz, leaving hair soft, shiny & voluminous
- Led display with temperature cycling mode technology
- Slim & lightweight

# ELLE ORAL & HEALTH CARE





**Item : EL1206**

### FEATURES:

- Medium bristles ensure a gentle and effective brushing easily reach back and deep between teeth
- Easy grip handle for comfort while brushing



**Item : EL1208**

### FEATURES:

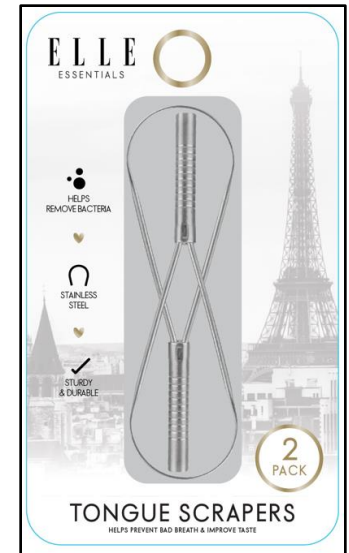
- Charcoal infused bristles
- Whitens teeth by removing surface stains
- Medium bristles ensure a gentle and effective cleaning
- Easy grip handle



**Item : EL1212**

### FEATURES:

- 12 pack deep clean toothbrush in assorted colors
- Soft bristles for sensitive teeth
- Easily reach back and deep between teeth
- Easy grip handle



**Item : EL1202**

### FEATURES:

- Helps remove bacteria & prevent bad breath
- Helps improve your sense of taste
- Stainless steel
- Easy to clean



**Item : EL1022-LIL**

### FEATURES:

- Oscillating head with rounded bristles
- Oscillates at 9,800 strokes per minute
- IPX7 waterproof
- Removes plaque and stains
- Bonus: storage/travel case
- Operates on 1 AA battery ( not included)



**Item : EL1022-SFM**

### FEATURES:

- Oscillating head with rounded bristles
- Oscillates at 9,800 strokes per minute
- IPX7 waterproof
- Removes plaque and stains
- Bonus: storage/travel case
- Operates on 1 AA battery ( not included)



**Item : EL1034-WHT**

### FEATURES:

- Pulsating head
- Dupont bristles
- Pulsating at 2,400 strokes per minute
- Washable design IPX7 waterproof
- Effectively removes more plaque, stains & bacteria in mouth than manual brushing
- 6 brushing modes to clean & whiten teeth
- Portable design perfect for on-the-go
- USB charger on base of toothbrush-twist off to charge



**Item : EL1034-NOC**





**Item : EL1018**

### FEATURES:

- Hot therapy: Soothes wrist aches, stiff joints & sore muscles
- Cold therapy: soothes sprains, strains & help reduce swelling
- Reusable gel pack with soft plush backing Freezer & microwave safe
- Adjustable straps & flexible design for the perfect fit
- One size fits most



**Item : EL1038**

### FEATURES:

- Hot therapy: Soothes knee & elbow aches, stiff joints & sore muscles
- Cold therapy: soothes sprains, strains & help reduce swelling
- Reusable gel pack with soft plush backing Freezer & microwave safe
- Adjustable straps & flexible design for the perfect fit
- One size fits most



**Item : EL1048**

### FEATURES:

- Hot therapy: Soothes body aches, stiff joints & sore muscles
- Cold therapy: soothes strains & help reduce swelling
- Reusable gel pack with soft plush backing Freezer & microwave safe
- Adjustable straps & flexible design for the perfect fit
- One size fits most



**Item : EL1058**

### FEATURES:

- Hot therapy: helps relieve puffy eyes, dry eyes, tension, dark circles, fatigue & stress
- Cold therapy: helps relieve fever, sinus pressure, headache & migraines
- Reusable gel pack with soft plush backing Freezer & microwave safe
- Adjustable straps & flexible design for the perfect fit
- One size fits most



**Item : EL1068**

### FEATURES:

- Hot therapy: soothes ankle aches, stiff joints & sore muscles
- Cold therapy: soothes sprains, strains & help reduce swelling
- Reusable gel pack with soft plush backing Freezer & microwave safe
- Adjustable straps & flexible design for the perfect fit
- One size fits most



**Item : EL1078**

### FEATURES:

- Hot therapy: helps reduce puffiness & soothe irritation
- Cold therapy: helps with migraines & sinuses
- Reusable gel pack with soft plush backing Freezer & microwave safe
- Adjustable straps & flexible design for the perfect fit
- One size fits most



**Item : EL1088**

### FEATURES:

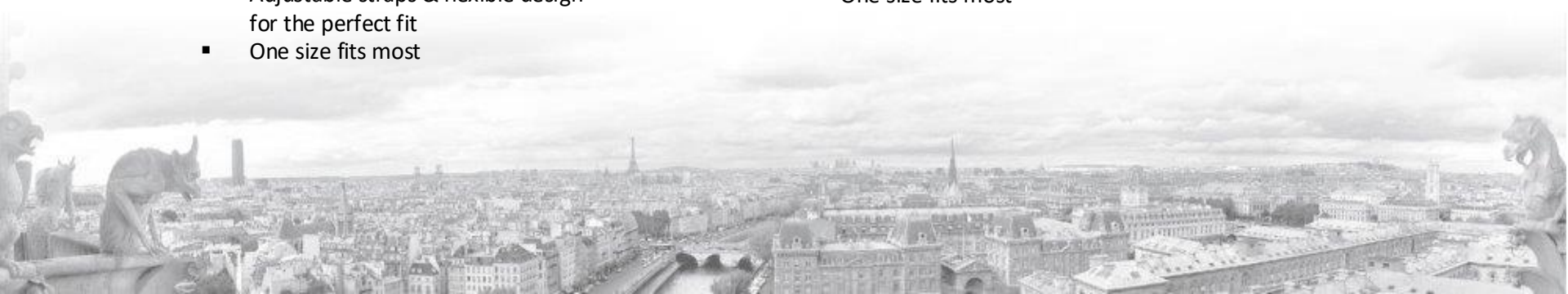
- Hot therapy: helps relieve fatigue & stress
- Cold therapy: helps relieve migraines, cluster headaches, tension & heat exhaustions
- Reusable gel pack with soft plush backing Freezer & microwave safe
- Adjustable straps & flexible design for the perfect fit
- One size fits most



**Item : EL1098**

### FEATURES:

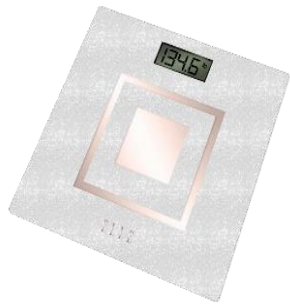
- Hot therapy: soothes neck aches, pain and stiffness
- Cold therapy: helps reduce swelling
- Reusable gel pack with soft plush backing Freezer & microwave safe
- Adjustable straps & flexible design for the perfect fit
- One size fits most



# ELLE SCALES



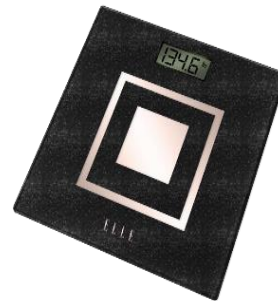




**Item : EL135-WHT**

## FEATURES:

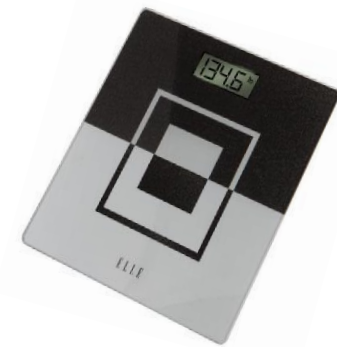
- Provides accurate and reliable weight readings
- Non-slip surface for stability and safety during use
- Sleek and modern design looks great in any bathroom
- Maximum load of 400lbs



**Item : EL135-GLK**

## FEATURES:

- Provides accurate and reliable weight readings
- Non-slip surface for stability and safety during use
- Sleek and modern design looks great in any bathroom
- Maximum load of 400lbs



**Item : EL135-SG**

## FEATURES:

- Provides accurate and reliable weight readings
- Non-slip surface for stability and safety during use
- Sleek and modern design looks great in any bathroom
- Maximum load of 400lbs





**Item : EL263-GWHT**

**FEATURES:**

- Measures
- Weight
- Body fat
- Hydration level
- Bone mass
- Muscle mass
- Calories
- Body mass index



**Item : EL263-GBLK**

**FEATURES:**

- Measures
- Weight
- Body fat
- Hydration level
- Bone mass
- Muscle mass
- Calories
- Body mass index



**Item : EL263-GPUR**

**FEATURES:**

- Measures
- Weight
- Body fat
- Hydration level
- Bone mass
- Muscle mass
- Calories
- Body mass index



**Item : EL263-GGLD**

**FEATURES:**

- Measures
- Weight
- Body fat
- Hydration level
- Bone mass
- Muscle mass
- Calories
- Body mass index



# ELLE MASSAGE





Item : EL1712-PNK

### FEATURES:

- 4 interchangeable heads to help target specific body parts
- Quick charge & long run-time
- Ultimate deep tissue massage
- 32 intensity levels
- 1200-3200 percussions per minute
- Rechargeable type-c cable
- LED display
- Quick charge and long run-time



Item : EL1712-WHT

### FEATURES:

- 4 interchangeable heads to help target specific body parts
- Quick charge & long run-time
- Ultimate deep tissue massage
- 32 intensity levels
- 1200-3200 percussions per minute
- Rechargeable type-c cable
- LED display
- Quick charge and long run-time

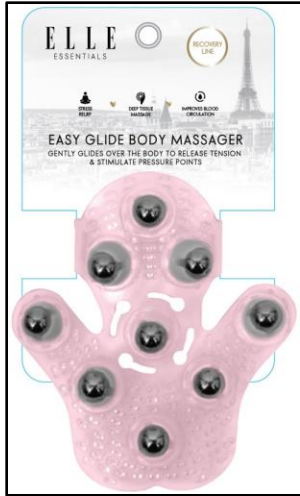


Item : EL1718-PNK

### FEATURES:

- 6 intensity levels with 5 attachments to provide different pressure on specific targeted muscle areas
- Deep tissue massage mimics rolling pressure & patterns of shiatsu massage
- Improves blood circulation
- Reduces inflammation
- Promotes muscle activation & workout recovery

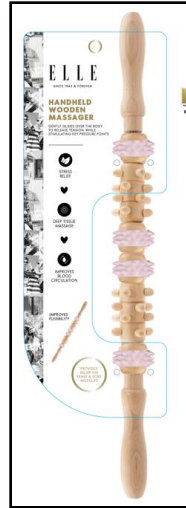




**Item : EL1036**

### FEATURES:

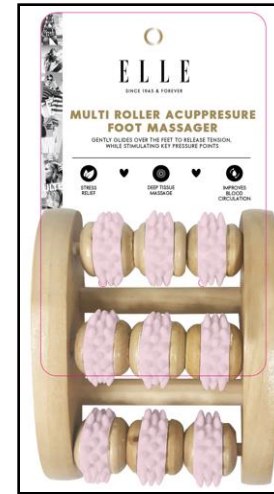
- Helps ease away stress & promotes blood circulation
- Instantly relieve all tension in muscle & pressure points by gently gliding along body
- 360° rotating steel massage balls
- Portable & lightweight design; perfect for on-the-go



**Item : EL1043**

### FEATURES:

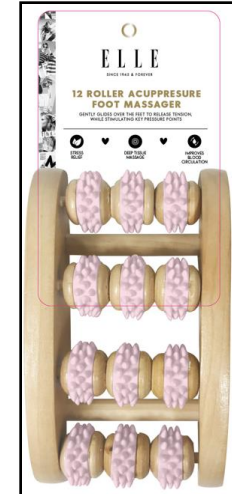
- Use before and after workout to improve flexibility and recovery
- Provides relief for sore muscles
- Targets upper and lower back, neck, shoulders, quads, hamstrings, calves and deltoids



**Item : EL2004**

### FEATURES:

- Designed for acupressure and reflexology
- Great for : pre & post workout, warms up your feet, increase circulation, relieves plantar fasciitis, heel pain, arch pain and helps sore feet



**Item : EL2005**

### FEATURES:

- 4 rows of 3 independently spinning beads
- Designed for acupressure and reflexology
- Great for : pre & post workout, warms up your feet, increase circulation, relieves plantar fasciitis, heel pain, arch pain and helps sore feet



**Item : EL2501**

### **FEATURES:**

- Massages gently, leaving you feeling relaxed and rejuvenated
- Enjoy custom infusions with herbs, flowers, and your favorite essential oils, plus gentle pumice stone exfoliation
- 4 textured rollers deliver a deep massage at your own pace
- Collapsible 2-inch design is highly portable and stores easily

